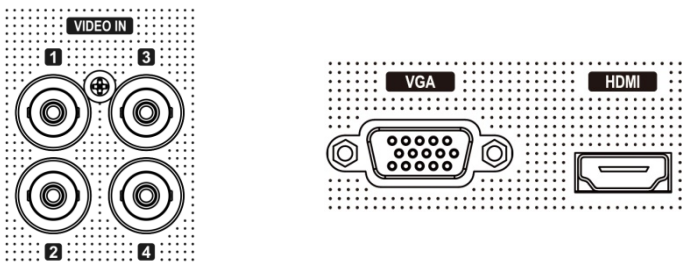


# Quick Guide for using DVR

## 1. HOW TO START

This guide covers the 4, 8, 16-channel DVRs. The DVRs are identical except for the number of cameras, audio, inputs and alarms. The GUI illustrations and descriptions in this manual are based on the 4 channel model.

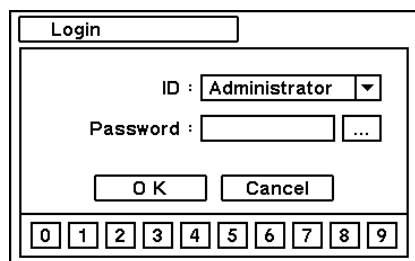


The DVR can record VGA monitor video output and HDMI monitor can be the same.

- To power up the system, simply connect the power cable. System will start automatically once the power cable is connected.

## 2. HOW TO LOG-IN

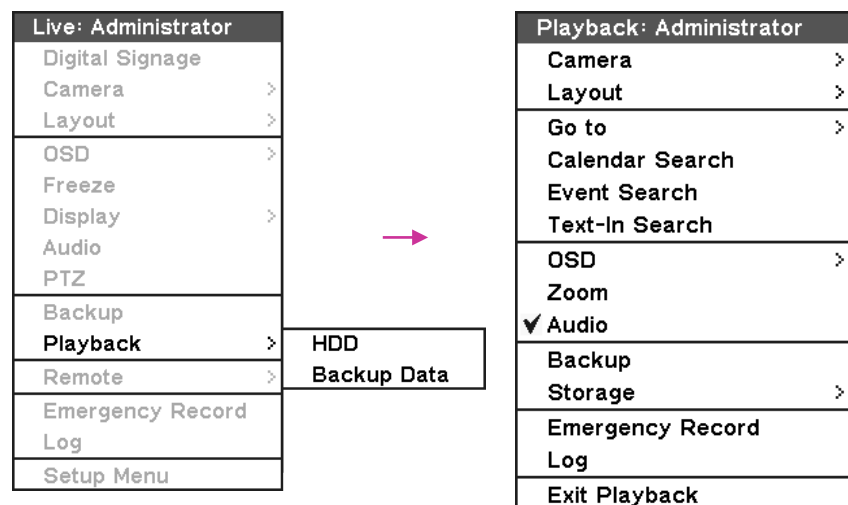
Requires ID and PW to enter main menu of DVR system. The factory default password is 'none' so press OK to log in to the system for a first time log in.



- Password can be set under password set up option (MENU > SYSTEM > User). System will be automatically log out if it is not in-use for sometime. This "Auto Logout Time" can be set under password set up option (MENU > SYSTEM > User).

## 5. HOW TO PLAYBACK

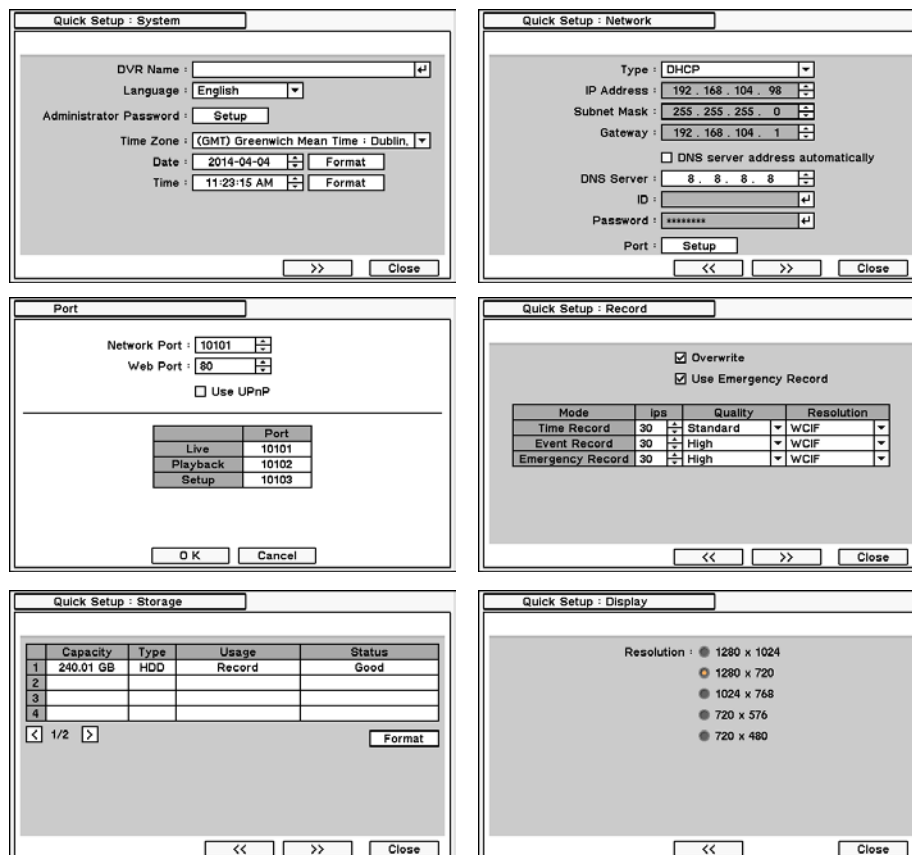
The system provides various playback menu to search recorded data. Please click right Mouse button on Search Mode and select the storage type. If backup data is selected, the data on external HDD can be searched.



- Camera** : Select camera no.
- Layout** : Select display mode (8/16ch. DVR Only)
- Go to** : Search recorded data by time/date. Move to the beginning or end of recorded data. Also search data by 5/10/15/30/60 seconds backward from the current time of search.
- Search** : Select Calendar Search, Event Search and Text In Search
- OSD** : Select OSD display option
- Text-In Info** : Select Text display option for POS or ATM machines.
- Zoom** : Zoom in image by X2
- Audio** : Select Audio outs
- Backup** : Select backup or Clip Copy option
- Emergency Record** : Start Emergency Recording
- Log** : Select System/Event log
- Exit Playback** : Exit Search Mode and return to Live Mode

## 3. QUICK SETUP

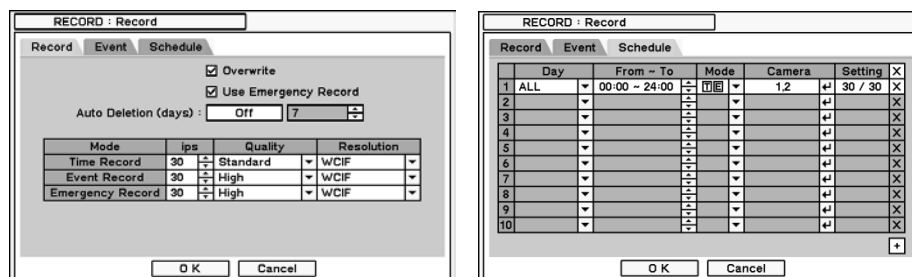
Quick Setup Menu allows easy and basic setup for main menu settings.



\*Note : HDD needs to be formatted before recording.

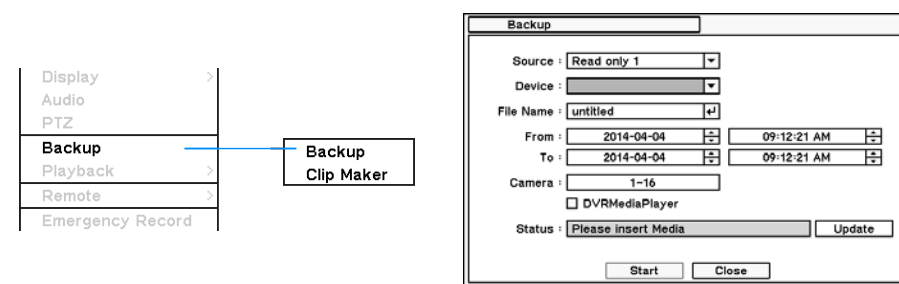
## 4. HOW TO RECORD

DVR begins recording when it boots up according to the scheduled set up. Below images show default factory recording settings. The recording options such as resolution, quality, schedule and etc can be changed at users' convenience.



## 6. HOW TO BACKUP

Press the 'Backup' button or go to Backup menu under Contextual Menu appears by clicking right button on the Mouse to enter Backup menu. Use USB Storage (USB Memory or HDD) to backup recorded data. Recommend to have USB device connected before go into back up menu.



Clip Maker allows to create single channel backup file which can be played on PC. Select Clip Maker option on the pop up menu during the live or pause mode on the playback.

## \* ICON GUIDE



- MENU** : Pressing the Menu will bring up the main menu list
- 69GB/69GB** : Shows the % of HDD being used
- Overwrite icon** : Turns on when the HDD is set to be overwritten.
- Sequence icon** : Sequence display mode
- Remote icon** : Turns on when the system is connected to the Remote Monitoring Software.
- Alarm icon** : Turns on when the Alarm is being activated
- E.REC icon** : E.REC (Emergency Record) mode
- Remote Controller icon** : Remote Controller
- Red circle icon** : Recording (Red)
- Grey circle icon** : No Recording
- Red circle with slash icon** : Event Recording (Red)
- Blue circle icon** : Pre Event Recording (Blue)
- Red circle with slash icon** : E.REC (Emergency Recording)
- Motion icon** : Motion Detection
- Sensor icon** : Sensor Detection
- PTZ icon** : PTZ Camera
- Red circle icon** : Backup (Red)
- Blue circle icon** : Clip Maker (Blue)
- Red circle icon** : Instant Backup
- A icon** : Text-in
- Red X icon** : Video Loss

# Using Remote Software

## 1. STARTING THE SOFTWARE

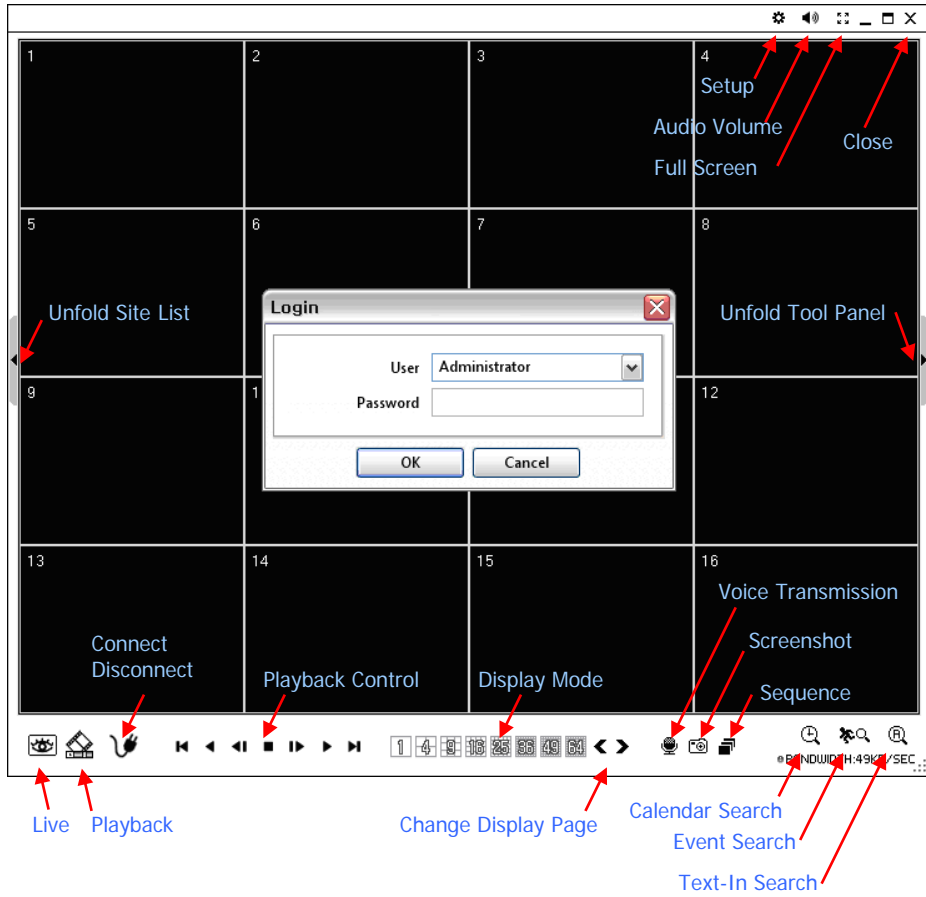
**\*Note:** Before using the remote software, refer to a customer card in the package to download the software. Please install the software on your PC once you download it.

Double click on program icon on PC to run the remote software.

Main screen of the remote software appears as shown below.

**\*Note:** A minimum resolution should be more than 1024 x 620; and a recommendable one is over 1280 x 1024.

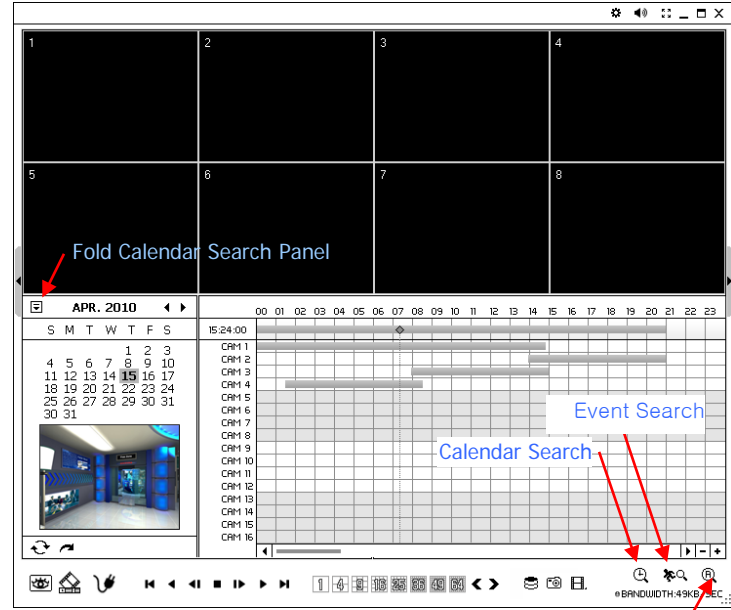
## 2. HOW TO USE REMOTE SOFTWARE



The Log In window will appear when the remote software starts. Select user level as each user will have different authority level over the system control depend on the pre set up. Enter OK once the user level is selected as the default password is 'none'.

- **Live:** Click the image to enter the live mode.
- **Playback:** Click the image to enter the playback mode.
- **Connect / Disconnect:** Click button to connect a site as live or playback mode.
- **Playback Control:** Use buttons to control playback images.
- **Display Mode:** Select display modes. (1, 4, 9, 16, 25, 36, 49, 64 and full screen)
- **Change Display Page:** Change Display Mode to Previous or Next page in camera order.
- **Voice Transmission:** Click button to transmit remote voice to the local DVR.
- **Screenshot:** Capture the current screen and save it as a image file.
- **Sequence:** Display images on pre selected sites in sequence mode.
- **Setup:** To change set up on the Remote Software or a remote DVR.
- **Audio Volume:** Click Audio icon to select audio volume and mute options.
  - Select a camera to receive Audio of the selected camera (highlighted in border lines)
- **Full Screen:** Display image on full screen mode.
- **Close:** Click the icon to close the software

## 3. REMOTE PLAYBACK

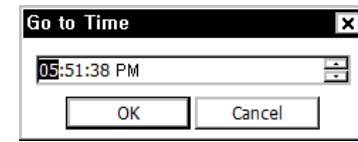


### Playback Control Button

- ▶ Beginning
- ◀ Reverse Play / Rewind
- ◀◀ Step Backward
- Stop
- ▶▶ Step Forward
- ▶ Play / Fast Forward
- ▶▶ End

### Text-In Search

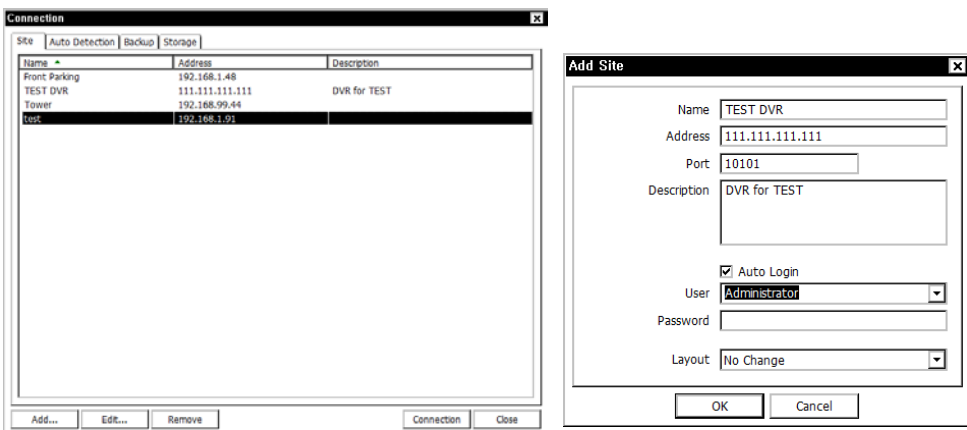
Click on icon to display time search window. Enter specific time to search the data



Click on icon refresh and update the calendar info.

## 4. SITE SET UP

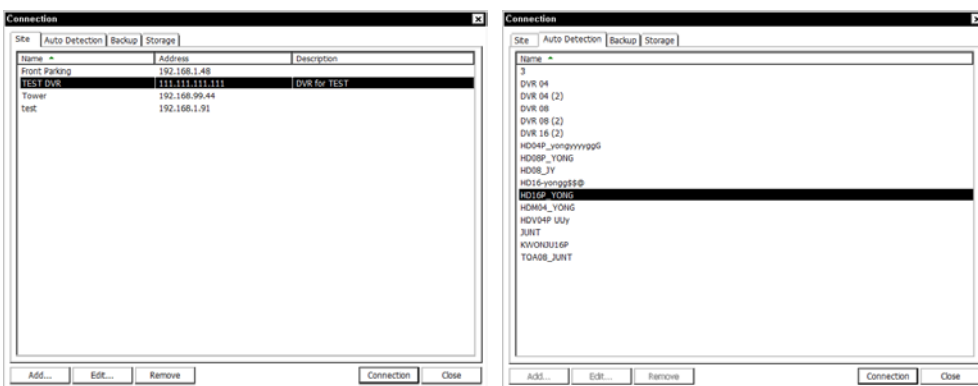
Click Connect button to display registered remote locations or add new locations.



Click Add button to add remote location and required information.

Click OK to save information and complete the registration.

**\*Note:** Layout can be changed after begin connected using the display option on the menu.

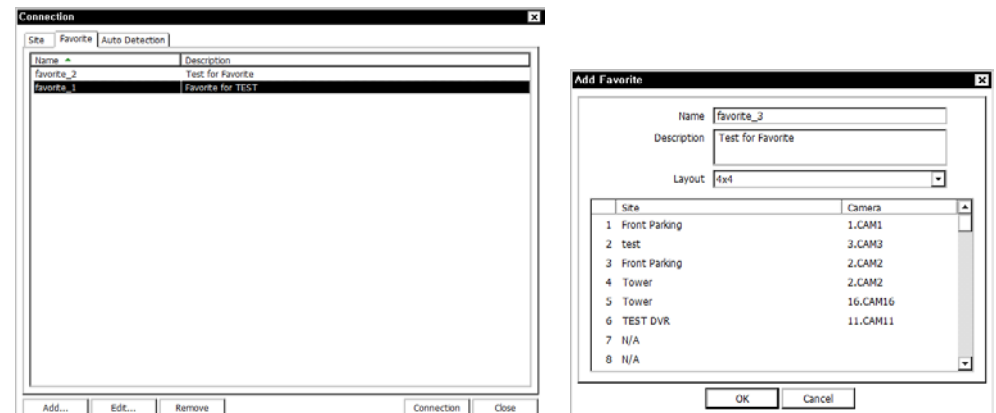


The DVR and the Remote Software on PC start searching each other once they are on the same local network. The Auto Detection menu shows the DVRs detected on the same local network.

**\*Note:** Auto Detection finds DVRs on the local network automatically. To use this function, Apple® Bonjour® needs to be installed in PC. Please refer to <http://www.apple.com/bonjour> for more details and download.

## 5. FAVORITE SET UP

Favorite function allows multi site management. Up to 64 different cameras and sites can be monitored and managed on one screen. Select Favorite tap.



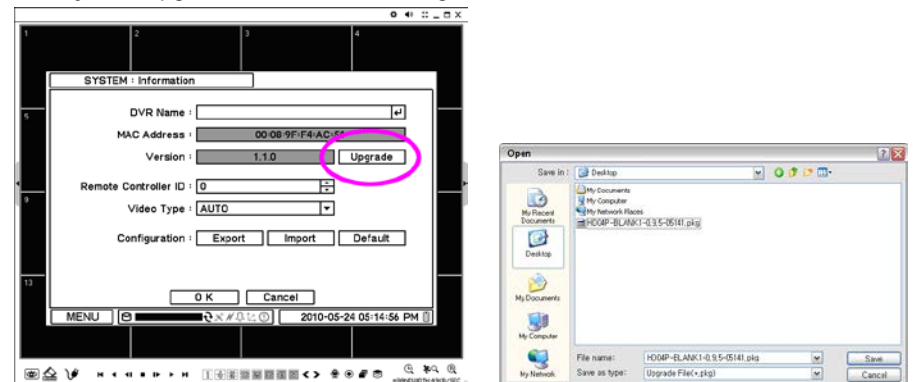
Click "Add" button to group multiple sites as one favorite group. Enter the group name and description. Up to 64 different cameras or sites can be grouped and displayed together.

Select sites and cameras from the drop down list by clicking button.

**\*Note:** Sites should be registered under 'Site' menu before setting the favorite.

## 6. REMOTE UPGRADE

The system upgrade can be done through the remote software on PC.



- Click on and Remote Setup to enter remote setup menu.
- Select Information under System.
- Click Upgrade next to software version to find a file for upgrade
- Select the file location and the file to upgrade the system.

**\*Note:** Please do not close down the remote software or power off a computer until the system upgrade is completed.